



AC INFINITY

CLOUDLINE

MIXED FLOW DUCT FAN SYSTEMS

USER MANUAL

WELCOME

Thank you for choosing AC Infinity. We are committed to product quality and friendly customer service. If you have any questions or suggestions, please don't hesitate to [contact](#) us. Visit www.acinfinity.com and click contact for our contact information.

EMAIL

support@acinfinity.com

WEB

www.acinfinity.com

LOCATION

Los Angeles, CA

MANUAL CODE CL1910X1

PRODUCT

CLOUDLINE S4
CLOUDLINE S6
CLOUDLINE S8
CLOUDLINE S10
CLOUDLINE S12
CLOUDLINE T4
CLOUDLINE T6
CLOUDLINE T8
CLOUDLINE T10
CLOUDLINE T12

MODEL

AI-CLS4
AI-CLS6
AI-CLS8
AI-CLS10
AI-CLS12
AI-CLT4
AI-CLT6
AI-CLT8
AI-CLT10
AI-CLT12

UPC-A

819137020290
819137020306
819137020849
819137020856
819137021006
854759004785
854759004792
819137020276
819137020283
819137021013



EC models CANNOT be daisy chained with DC models. See page 19 & 20 for more information on daisy-chaining fans and safety precautions.

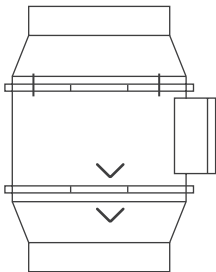
MANUAL INDEX

Manual Index	Page 5
Key Features	Page 6
Product Contents	Page 7
Installation (Mounting)	Page 9
Installation (Configuration Setup)	Page 14
Powering	Page 16
Programming	Page 25
Other AC Infinity Products	Page 33
Warranty	Page 34

KEY FEATURES

QUIET PWM MOTOR

PWM-controlled motor features precise speed control, reduced rotor noise, and energy-efficient DC voltage.

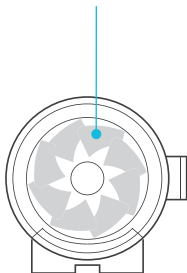


IP-44 PROTECTION

The inline duct fan is sealed to Ingress Protection 44 standards, rated with high resistance to liquids and dust.

STATOR BLADE FANS

Hydro-mechanical stator blades enable efficient airflow delivery in high static pressure environments.

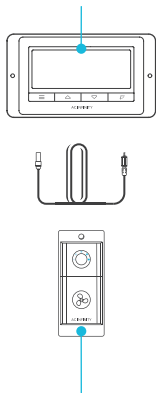


DUAL BALL BEARINGS

The motor contains ball bearings with an estimated 67,000 hour lifespan. Enables the fan to be mounted in any direction.

SMART CONTROLLER

Controls and monitors temp. and humidity using included probe. Also features high temp. triggers and alarms.



SPEED CONTROLLER

Single button controller with circular readout display that enables fan speed control in eight speeds.

PRODUCT CONTENTS

CLOUDLINE S-Series



DUCT FAN
SYSTEM
(x1)



CONTROLLER
SCREW SET
(x2)

CLOUDLINE T-Series



SMART
CONTROLLER
(x1)



SENSOR
PROBE
(x1)



MACHINE
SCREWS
(x2)

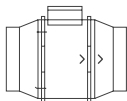


WOOD
SCREWS
(x2)



CONTROLLER
SCREW SET
(x2)

CLOUDLINE S-Series/T-Series (Included in Both Series)



DUCT FAN
SYSTEM
(x1)



DUCT
CLAMP
(x2)



WIRE
TIE
(x6)



CABLE TIE
MOUNT
(x6)



WALL
ANCHOR
(x4)

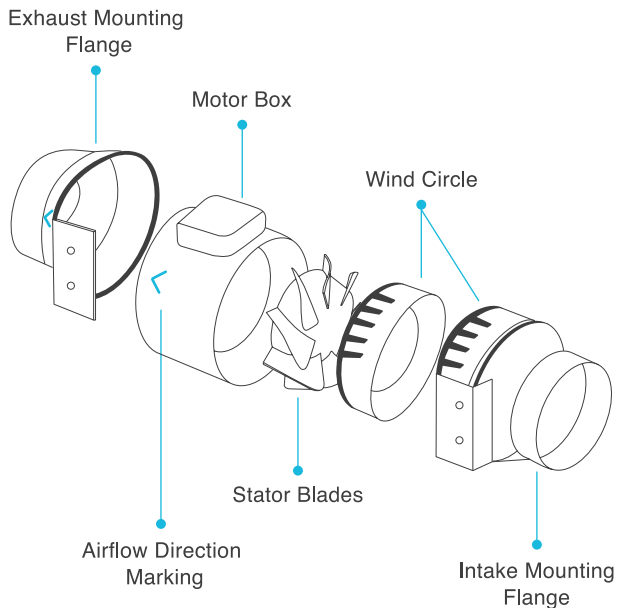


WOOD
SCREWS
(x6)



DUCT FAN
SCREW SET
(x4)

PRODUCT CONTENTS

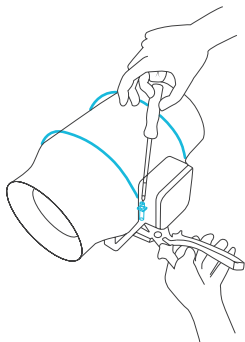


INSTALLATION

MOUNTING

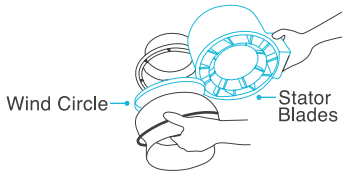
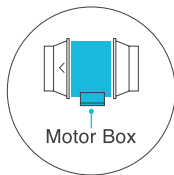
STEP 1

Unscrew and loosen the metal rings using a Phillips screwdriver and pliers.



STEP 2

Remove the motor box from the flange bracket. Remove the wind circle between the motor box and the intake flange.

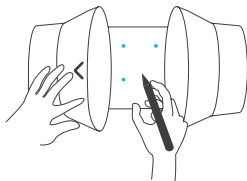


INSTALLATION

MOUNTING

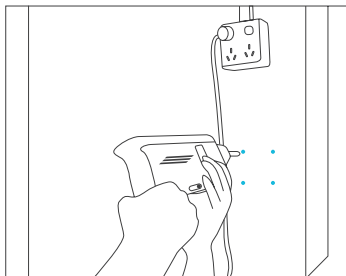
STEP 3

Use the flange bracket to set your desired fan position. Mark the four mounting holes.



STEP 4

Drill four holes into the marked locations. Make sure your mounting area is structurally sound and free from obstruction.

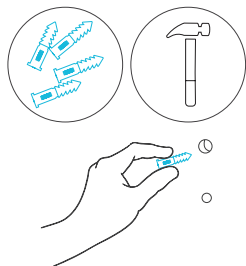


INSTALLATION

MOUNTING

STEP 5

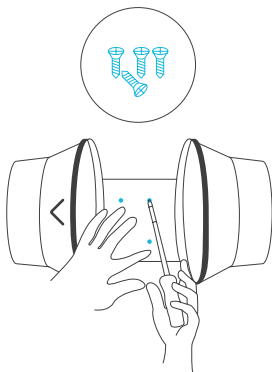
If you are mounting onto anything other than a wood support or stud, insert the included four wall anchors into the drilled mounting holes. You may need to use a hammer to secure them through the holes.



STEP 6

Align the flange bracket's holes with the wall anchors. Screw in four wood screws with a screwdriver or drill to secure the flange bracket.

Make sure its airflow arrow is pointing in your desired direction.

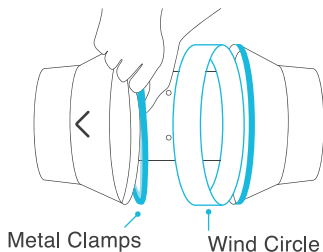


INSTALLATION

MOUNTING

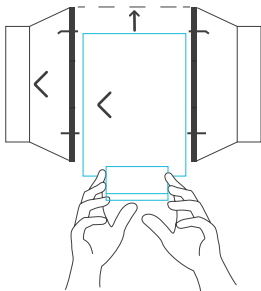
STEP 7

Place the wind circle back into the intake flange and reposition the metal clamps over the flanges if applicable.



STEP 8

Slide the motor box back into the flange bracket, making sure its airflow arrow is pointing in the same direction as the flange bracket's arrow. Tighten the metal clamps using a Phillips screwdriver and pliers to secure the motor box.

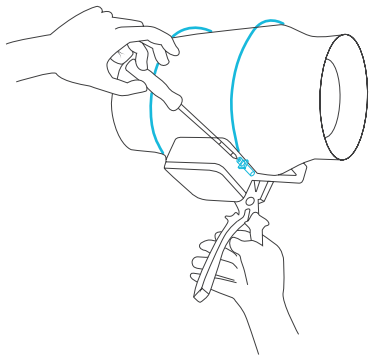


INSTALLATION

MOUNTING

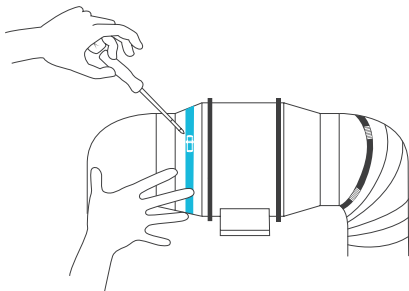
STEP 9

Place the metal rings back onto the flanges and tighten the screws back to secure the fan.



STEP 10

If installing ducting, use the included duct clamps to secure it to either end of the duct fan, making sure there is a tight seal. Tighten the duct clamps using a flathead screwdriver.

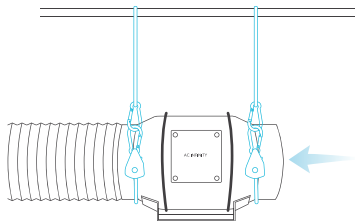


INSTALLATION

CONFIGURATION SET-UP

STEP 11(a) - Hanging Upward

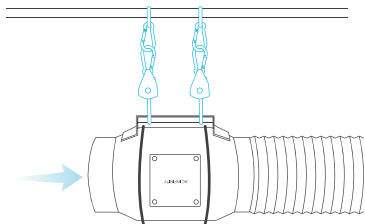
If installing with rope hangers (sold separately), loop the ropes around the flanges and tighten the rope to secure the fan.



STEP 11(b) - Hanging Downward

You may also hang the fan by looping the rope hangers around its mounting plate. Tighten the rope to secure the fan.

Make sure the fan's airflow arrow is pointing towards your desired direction.



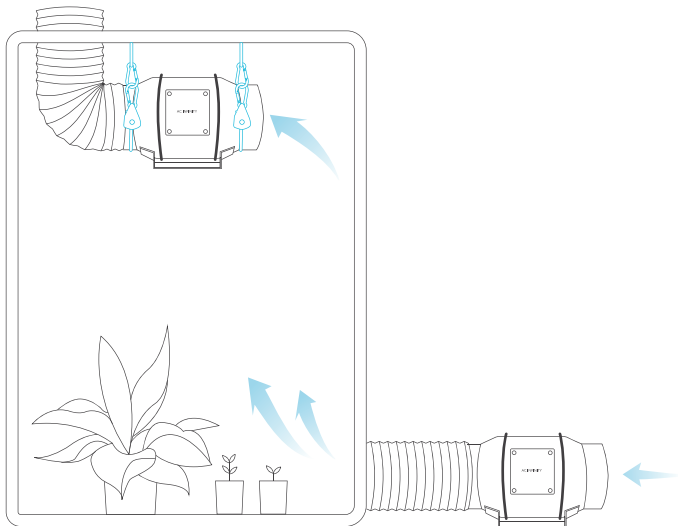
INSTALLATION

CONFIGURATION SET-UP

Intake and Exhaust

This fan can be used as either an intake fan or an exhaust fan in grow rooms and larger grow tents. To achieve optimal whole space ventilation, the intake fan or opening - if not using a fan - must be situated at a bottom corner of your grow space. The exhaust fan must be hung (shown below) or mounted at the highest opposite corner possible.

Make sure the intake fan's airflow arrow is pointing towards your grow space and the exhaust fan's arrow pointing away from your grow space.

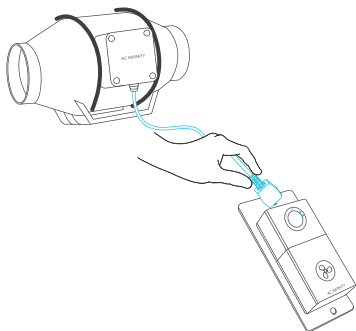


POWERING AND SETUP

S-SERIES

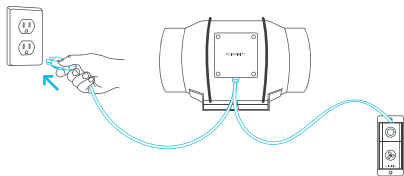
STEP 1

Plug the duct fan's 4-pin molex connector into the speed controller's port at the top.



STEP 2

Lastly, to power both the fan and controller, plug the fans power cord into an AC power outlet.
(For EC Motor fans only)



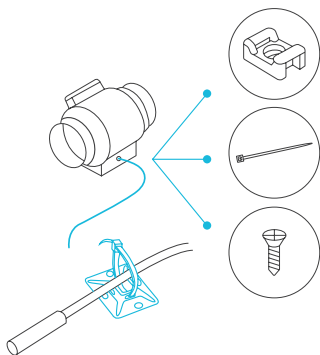
POWERING AND SETUP

T-SERIES

STEP 1

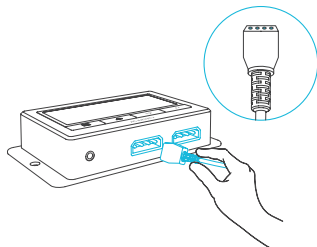
You may cable manage the cords using tie mounts, wood screws, and zip ties included with this fan.

Secure the tie mounts onto a surface using the wood screws. Loop the zip ties around the cords into the tie mounts.



STEP 2

Plug the duct fan's 4-pin molex connector into the universal controller's left port signified by the fan/power symbol.

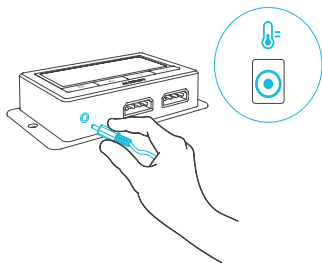


POWERING AND SETUP

T-SERIES

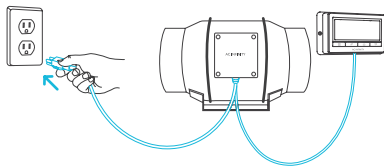
STEP 3

Plug the sensor probe into the controller's 3.5mm jack. Set the probe near your plants in your grow tent for the most accurate reading.



STEP 4

Lastly, to power both the fan and controller, plug the fans power cord into an AC power outlet. (For EC Motor fans only)

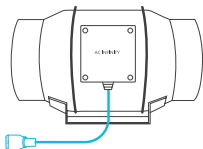


ADDING MORE FANS

DC/EC Motors

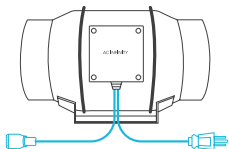
To find out your fan's motor type, look at its power cord(s). DC-motor CLOUDLINE fans have one female molex connector cord and include an AC adapter that must be plugged into the controller and an outlet. EC-motor CLOUDLINE fans have two cords, featuring a molex connector and a three-pronged power plug that directly connects to an outlet.

DC MOTOR



DC models have one cord with a molex connector and include an AC adapter.

EC MOTOR

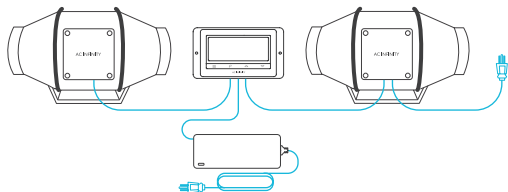


EC models have two cords with a molex connector and a three-pronged plug.

DC MOTOR

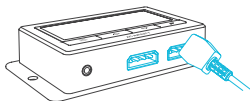


EC MOTOR



DO NOT connect a DC-motor fan with an EC-motor fan! Daisy chaining these fans together will cause electrical damage.

ADDING MORE FANS



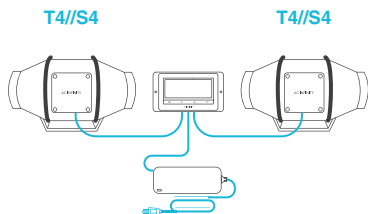
The smart controller for the CLOUDLINE T-Series has an additional port so that you can add an S-Series fan to power and control two fans together. Please see below for limitations.

T-SERIES CONTROLLER

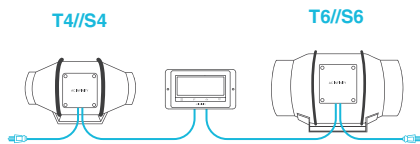
Smart controllers for T-Series models with DC motors can support two fans of the same tier model. For example, the CLOUDLINE T4 can only support an S4 fan, the CLOUDLINE T6 can only support an S6 fan and so on.

Smart controllers for T-Series models with EC motors can support two fans of any size. The two EC-motor fans must be plugged in to an outlet to power the fans and the controller. See images below.

DC MOTOR



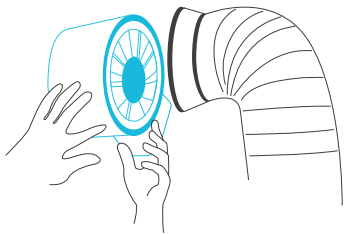
EC MOTOR



CLEANING

STEP 1

Remove the motor box from the mounting flange. Refer to steps 1 and 2 to learn how to remove the motor box. (Refer to steps 1 and 2 of the mounting installation section to learn how to remove the motor box).



STEP 2

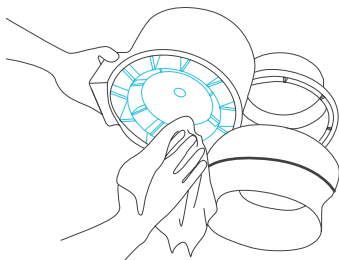
Use a damp cloth to clear the impeller and fan blades of any dust and debris. Remove the wind circle in between the motor box and input flange.



CLEANING

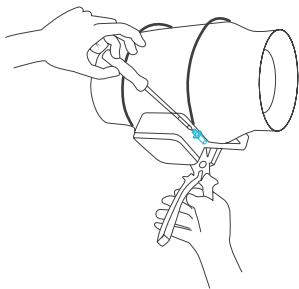
STEP 3

Clear the stator blades of any dust and debris on the opposite end. Clean the area inside the output and exhaust flanges.



STEP 4

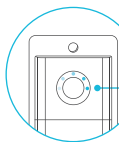
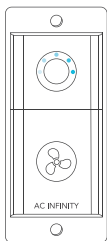
Secure the motor box onto the mounting flanges. Refer to step 7-9 to learn how to secure the motor box.



CONTROLLER PROGRAMMING

FAN SPEED ADJUSTING

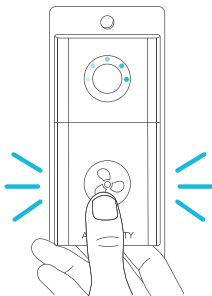
The controller features a single button that controls the fan speed from 0-8. Pressing the speed button increases the fan speed in one unit increments. Pressing the button at the 8 setting will set the fan speed back to 0.



Fan Speed Indicator

POWERING ON/OFF

Holding the speed button for 4 seconds will turn the fan OFF. Pressing it again from OFF will turn the fan ON at its last speed setting.



PROGRAMMING

1. MODE BUTTON

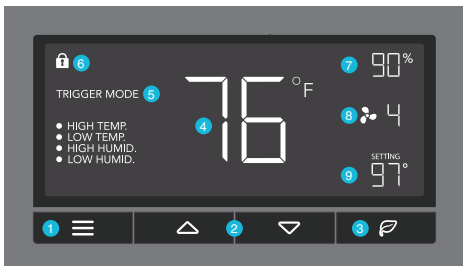
Cycles through the controller's temperature/humidity programming: ON, OFF, TIMER, AUTO (4 triggers), and ALARM (4 settings).

2. UP / DOWN BUTTON

Adjusts the settings of the mode that you are in. Up button raises and down button lowers. Hold both to turn off triggers.

3. LEAF BUTTON

Turns the screen off while programs run in the background. Hold for two seconds to lock or unlock the LCD display.



4. PROBE TEMP.

Displays the current temperature that the corded sensor probe is measuring. Shows "- -" if no probe is plugged in.

7. PROBE HUMIDITY

Displays the current humidity that the corded sensor probe is measuring. Shows "- -" if no probe is plugged in.

5. CONTROLLER MODE

Displays the mode that the controller is currently in. Pressing the mode button cycles through the modes.

8. FAN SPEED

Displays the current speed the fan is running at, or what speed it should be running at if no fans are plugged in.

6. ALERT ICONS

Displays the alerts and statuses from the controller, including the alarm and the screen lock.

9. SETTING

Displays the value you set for the current mode. Pressing the up or down button changes the value.

PROGRAMMING

MODE SETTING

Pressing the Mode button will cycle through the controller's available programming modes and settings: ON Mode, OFF Mode, TIMER Mode, AUTO Mode (4 triggers), ALARM Settings (4 settings).

ON MODE

In this mode, the fan will heat continuously regardless of temperature or humidity. Use this mode to set the fan's maximum blowing strength, ranging from 0-10, when triggers are activated.



OFF MODE

In this mode, the fan will not run regardless of temperature or humidity. Pushing the up or down button will change the display's brightness, ranging in 1/2/3/A3. On setting A3, the display will dim its brightness down to 1 if the device is left unattended for 30 seconds. Holding the up or down button will change the display's units to F or C, respectively.



TIMER MODE

In this mode, pressing the up or down button will set the timer. The fan will ramp up to ON Mode's setting until the timer's clock runs out. It will begin spinning 5 seconds after the timer is set.



Leaving the timer mode while it's running will pause it until you return to this mode.

PROGRAMMING

TRIGGER MODE: HIGH TEMPERATURE

In this mode, pressing the up or down button sets the high temperature trigger. The fan will activate if the probe's reading meets or exceeds this trigger.

It will gradually ramp up until it reaches the ON Mode's setting. If the probe's reading falls below your trigger, the fan will turn off. We recommend turning this trigger OFF when not in use during set up by holding the up and down buttons together.

You may set this trigger below the low temperature trigger to create a range where the fan is active.



Note that this trigger can activate as long as you are in AUTO Mode, even if you are viewing a different trigger within AUTO Mode.

TRIGGER MODE: LOW TEMPERATURE

In this mode, pressing the up or down button sets the low temperature trigger. The fan will activate if the probe's reading meets or falls below this trigger.

It will gradually ramp up until it reaches the ON Mode's setting. If the probe's reading rises above your trigger, the fan will turn off. We recommend turning this trigger OFF when not in use during set up by holding the up and down buttons together.

You may set this trigger above the high temperature trigger to create a range where the fan is active.



Note that this trigger can activate as long as you are in AUTO Mode, even if you are viewing a different trigger within AUTO Mode.

PROGRAMMING

TRIGGER MODE: HIGH HUMIDITY

In this mode, pressing the up or down button sets a high humidity trigger. The fan will activate if the probe's reading meets or exceeds this trigger.

It will gradually ramp up until it reaches the ON Mode's setting. If the probe's reading falls below your trigger, the fan will turn off. We recommend turning this trigger OFF when not in use during set up by holding the up and down buttons together.

You may set this trigger below the low humidity trigger to create a range where the fan is active.



Note that this trigger can activate as long as you are in AUTO Mode, even if you are viewing a different trigger within AUTO Mode.

TRIGGER MODE: LOW HUMIDITY

In this mode, pressing the up or down button sets the low humidity trigger. The fan will activate if the probe's reading meets or falls below the trigger.

It will gradually ramp up until it reaches the ON Mode's setting. If the probe's reading rises above your trigger, the fan will turn off. We recommend turning this trigger OFF when not in use during set up by holding the up and down buttons together.

You may set this trigger above the high humidity trigger to create a range where the fan is active.



Note that this trigger can activate as long as you are in AUTO Mode, even if you are viewing a different trigger within AUTO Mode.

PROGRAMMING

ALARM SETTING: HIGH TEMPERATURE

In this mode, pressing the up and down button sets a high temperature alarm. The alarm will sound and its icon will flash if the probe's reading exceeds the set temperature.

To activate the alarm, leave the alarm mode. The alarm will turn OFF if the probe's reading falls below the trigger or if any button is pressed. You can also set the alarm OFF by holding the up and down buttons together.

You may set this alarm below the low temperature trigger to create an operating range.



Note that alarm triggers can only activate in AUTO, ON, or TIMER Mode. Please leave ALARM SETTING to arm the controller.

ALARM SETTING: LOW TEMPERATURE

In this mode, pressing the up and down button sets a low temperature alarm. The alarm will sound and its icon will flash if the probe's reading falls below the set temperature.

To activate the alarm, leave the alarm mode. The alarm will turn OFF if the probe's reading rises above the trigger or if any button is pressed. You can also set the alarm OFF by holding the up and down buttons together.

You may set this alarm above the high temperature trigger to create an operating range.



Note that alarm triggers can only activate in AUTO, ON, or TIMER Mode. Please leave ALARM SETTING to arm the controller.

PROGRAMMING

ALARM SETTING: HIGH HUMIDITY

In this mode, pressing the up and down button sets a high humidity alarm. The alarm will sound and its icon will flash if the probe's reading exceeds the set humidity.

To activate the alarm, leave the alarm mode. The alarm will turn OFF if the probe's reading falls below the trigger or if any button is pressed. You can also set the alarm OFF by holding the up and down buttons together.

You may set this alarm below the low humidity trigger to create an operating range.



Note that alarm triggers can only activate in AUTO, ON, or TIMER Mode. Please leave ALARM SETTING to arm the controller.

ALARM SETTING: LOW HUMIDITY

In this mode, pressing the up and down button sets a low humidity alarm. The alarm will sound and its icon will flash if the probe's reading falls below the set humidity.

To activate the alarm, leave the alarm mode. The alarm will turn OFF if the probe's reading rises above the trigger or if any button is pressed. You can also set the alarm OFF by holding the up and down buttons together.

You may set this alarm above the high humidity trigger to create an operating range.



Note that alarm triggers can only activate in AUTO, ON, or TIMER Mode. Please leave ALARM SETTING to arm the controller.

PROGRAMMING

FAHRENHEIT OR CELSIUS

To switch between Fahrenheit and Celsius readings, set the controller to OFF Mode. Hold the up button to switch to Fahrenheit (°F) and the down button to switch to Celsius (°C).

DISPLAY BRIGHTNESS

To adjust the brightness of the display, set the controller to OFF Mode, then press the up or down button to increase or decrease the brightness level. The brightness range is 1/2/3/A3.

TEMPERATURE CALIBRATION

To adjust the temperature that the probe sensor is measuring, press the MODE and UP button simultaneously. This can be done while the controller is any mode. The calibration cycle ranges from -8°F to 8°F (or -4°C to 4°C). You may use this setting to match the controller's temperature reading with your thermostat's reading.

HUMIDITY CALIBRATION

To adjust the probe sensor's humidity reading, press the MODE and DOWN button simultaneously. This can be done in any mode. The calibration cycle ranges from -8% to 8%.

CONTROLLER LOCK

To lock the controller and prevent accidental setting changes, hold the LEAF button for three or more seconds. While the display is locked, you will not be able to switch modes or adjust settings. You will only be able to put the controller in ECO display. Holding the LEAF button for three or more seconds will unlock the controller.

ECO-MODE

To turn off the LCD display, press the LEAF button. While the screen is off, all programs, settings, and alarms will run in the background. You can activate ECO Mode while the controller is locked. To exit ECO mode, press any button.

PROGRAMMING

ALERT ICONS

The top left of the display shows the alert icons. Icons may flash when the controller signals an alert to tell you a particular function or alarm is being triggered.



DISPLAY LOCK ALERT

This icon is visible when the controller has been locked. The icon will flash to alert you that the controller is locked if you try to change the mode or settings.



HUMIDITY ALARM ALERT

This icon will flash when the high or low humidity alarm has been triggered.



TEMPERATURE ALARM ALERT

This icon will flash when the high or low temperature alarm has been triggered.



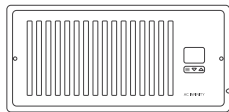
CHECK FAN ALERT

This icon will flash when the fan's probe senses interference to its functioning. Check the fan for possible issues. If the fan is not heating up, please see the warranty page for replacement information.

AC INFINITY PRODUCTS

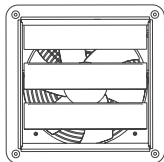
Register Booster Fans

The AIRTAP series is a line of register booster fans designed to quietly increase airflow coming from your central heat and air conditioning systems, increasing comfort for your home. Features a thermal controller with intelligent programming that will automatically adjust airflow strength in response to heating and cooling temperatures you have set.



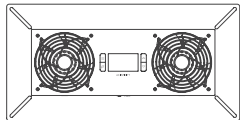
Shutter Fans

The AIRLIFT series is a line of shutter exhaust fans designed to expel heat, moisture, odor, and dust from spaces like greenhouses, garages, attics, and sheds. It features an intelligent controller that includes temperature and humidity programming, adjustable fan speed controls, a timer, and an alarm system.



Crawlspace Fans

The AIRTITAN is a line of weather-proof fans designed to provide ventilation, as well as odor and moisture control for crawl spaces and basements.



Discover the latest innovations in cooling and ventilation at acinfinity.com

WARRANTY

This warranty program is our commitment to you, the product sold by AC Infinity will be free from defects in manufacturing for a period of two years from the date of purchase. If a product is found to have a defect in material or workmanship, we will take the appropriate actions defined in this warranty to resolve any issues.

The warranty program applies to any order, purchase, receipt, or use of any products sold by AC Infinity or our authorized dealerships. The program covers products that have become defective, malfunctioned, or expressively if the product becomes unusable. The warranty program goes into effect on the date of purchase. The program will expire two years from the date of purchase. If your product becomes defective during that period, AC Infinity will replace your product with a new one or issue you a full refund.

The warranty program does not cover abuse or misuse. This includes physical damage, submersion of the product in water, incorrect installation such as wrong voltage input, and misuse for any reason other than intended purposes. AC Infinity is not responsible for consequential loss or incidental damages of any nature caused by the product. We will not warrant damage from normal wear such as scratches and dings.

For more information about our dealers and distributors, please contact our customer service at support@acinfinity.com or (626) 923-6399 Monday to Friday (9:00 am to 5:00 pm PST).



If you run into any issues with this product, contact us and we'll happily issue a replacement or a full refund!

COPYRIGHT © 2020 AC INFINITY INC. ALL RIGHTS RESERVED

No part of the materials including graphics or logos available in this booklet may be copied, photocopied, reproduced, translated or reduced to any electronic medium or machine readable form, in whole or in part, without specific permission from AC Infinity Inc.

www.acinfinity.com